

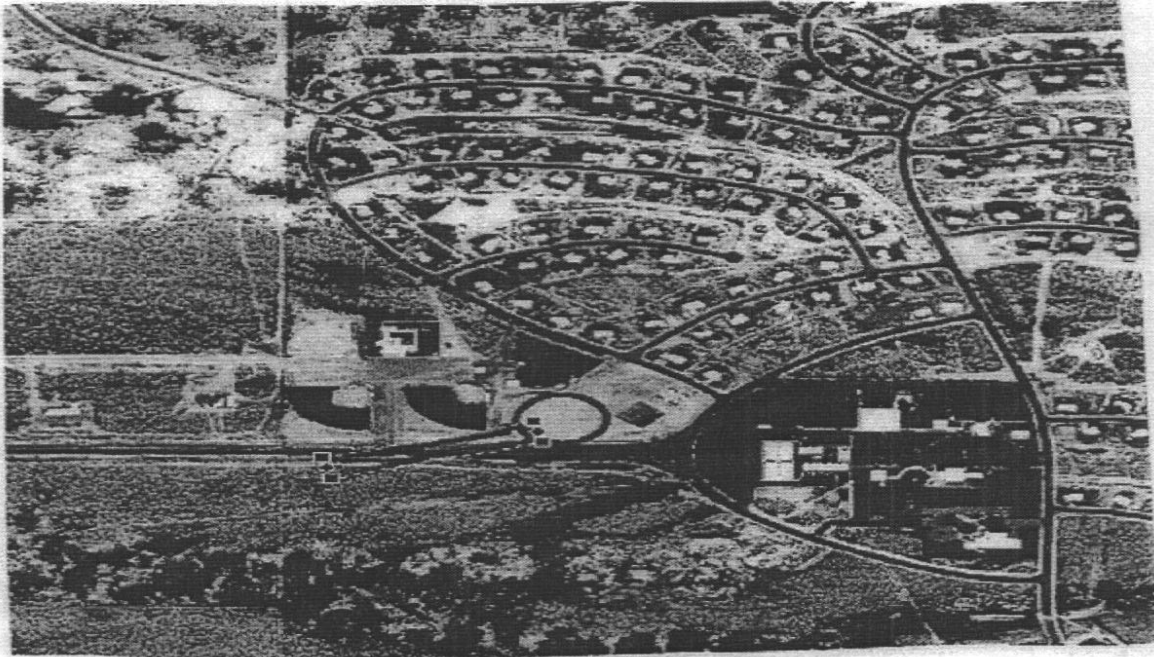
AIRBORNE UNIT ASSUMES RESPONSIBILITY FOR PERSONNEL INJURY AND EQUIPMENT DAMAGE ON DZ

DROP ZONE SURVEY	1A. DZ NAME Playas South Circular DZ		1B. ZAR INDEX NO.		2A. COUNTRY US		2B. STATE NM	
	3. MAP SERIES/SHEET NUMBER/ EDITION/ DATE OF MAP							
	4. SURVEY APPROVAL/DISAPPROVAL DATA							
4A1. DATE SURVEYED 20070619		4A2. TYPED NAME AND GRADE OF SURVEYOR Richard Barnes, 1LT			4A3. PHONE NUMBER (DSN) 228-9515		4A4. UNIT 563 OSS/OSK	
4B. DROP ZONE APPROVAL/DISAPPROVAL A = APPROVED D = DISAPPROVED	FOR	CDS/CRL/CRS	PER	HE	MFF	SATB	CRRC	HSLADS
	DAY	D	D	D	A	D	D	D
	NIGHT	D	D	D	A	D	D	D
4C. DATE APPROVED FOR GROUND OPERATIONS 3 July 07	NAME, GRADE AND SERVICE OF APPROVAL AUTHORITY PATRICK J. O'ROURKE, Maj, USAF				PHONE NUMBER (DSN) 228-0390		SIGNATURE <i>[Signature]</i>	
	UNIT AND LOCATION 48 RQS, Davis Monthan, AZ, 85707							
4D. DATE SAFETY OF FLIGHT REVIEW APPROVED 3 July 07	NAME AND GRADE OF REVIEWING OFFICER GUY R. HAGEN, Maj, USAF				PHONE NUMBER (DSN) 228-4163		SIGNATURE <i>[Signature]</i>	
	UNIT AND LOCATION 563rd OSS, Davis Monthan, AZ, 85707							
4E. DATE OF MAJCOM APPROVAL 3 JULY 07	NAME AND GRADE OF APPROVING AUTHORITY LEE K. DEPALO, Col, USAF				PHONE NUMBER (DSN) 228-0563		SIGNATURE <i>[Signature]</i>	
	UNIT AND LOCATION 563rd RQG, Davis Monthan, AZ 85707							
5. COORDINATING ACTIVITIES								
A. DZ CONTROLLING AGENCY OR UNIT 563 OSS OSO			B. MEMORANDUM OF UNDERSTANDING/LAND USE YES <input checked="" type="checkbox"/> NO <input type="checkbox"/> ATTACHED <input type="checkbox"/>			C. PHONE NUMBER (DSN) 228-1098		
D. RANGE CONTROL N/A			E. PHONE NUMBER (DSN) N/A					
6. DZ DIMENSIONS (YDS/MTRS) (FOR CIRCULAR DZ, ENTER RADIUS ONLY)								
A. LENGTH N/A		B. WIDTH N/A			C. RADIUS 50 yds			
POINT OF IMPACT DISTANCES FROM DZ LEADING EDGE			D. CDS PI N/A		E. PE PI N/A		F. HE PI N/A	
7. DZ AXIS DATA (OPTIONAL FOR CIRCULAR DZ)								
A. MAGNETIC N/A		B. GRID (MGRS) N/A			C. TRUE N/A		D. SOURCE DATE OF VARIATION DATA 20070619	
8. GROUND POINT ELEVATION		A. CDS PI N/A		B. HE PI N/A		C. PE PI 4375		D. HIGHEST 4395
9. DZ COORDINATES								
A. SPHEROID WGS-84		B. DATUM WGS-84		C. GRID ZONE 12R		D. EASTING N/A		E. NORTHING N/A
F. GPS DERIVED COORDINATES YES <input checked="" type="checkbox"/> NO <input type="checkbox"/>			G. POINT OF ORIGIN 12R YA32654 33584 (Entrance Gate w/gaurd); PI 108 yds @ 40°					
H. POINT		MGRS COORDINATES			WGS84 LATITUDE (D-M.MM)		WGS84 LONGITUDE (D-M.MM)	
DZ CENTERPOINT		12R YA 32728 33653			N 31° 54.897'		W 108° 32.323'	
CDS PI		N/A			N/A		N/A	
PE PI		12R YA 32728 33653			N 31° 54.897'		W 108° 32.323'	
HE PI		N/A			N/A		N/A	
I. DZ CORNERS MGRS COORDINATES								
LEFT LEADING EDGE N/A				RIGHT LEADING EDGE N/A				
LEFT TRAILING EDGE N/A				RIGHT TRAILING EDGE N/A				

DZ NAME

Playas South Circular DZ

10. DZ DIAGRAM



11. REMARKS

1. This DZ is an approved Special Purpose Drop Zone IAW AFI 13-217 para 2.5.11 and sub-paragraphs.
2. User is responsible to schedule Playas Training Area; POC for information (505) 835-5312.
3. Contact 563 OSS/OSO two weeks prior to schedule air space and create applicable NOTAMS
4. DZ frequencies require coordination with 563 RQG Spectrum Manager DSN 228-4442. Frequencies for Angel Thunder 07 only will be 240.1 (Pri) 123.0 (Sec Bisbee CTAF).
4. Directions to Playas: From I-10, South on Exit 49; Left at sign for Playas Training Area
5. Ensure prior coordination is made with Operations Officer/IT Manager at (505) 436-0500 w, (505) 418-7786 c, (505) 418-0102 fax. Gate guard will alert Operations of arrival and ensure escort to PI.
6. DZ is an Open field consisting of gravel and hard dirt
7. Field is in the center of entrance road to South; Tennis courts with fence and lights poles to East; Baseball fields to West; and Buildings to North

12. PHOTOGRAPH AVAILABLE

YES

NO

LOW LEVEL ROUTES

NONE AVAILABLE

ROUTE NAME/DESIGNATOR