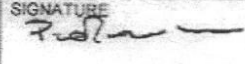
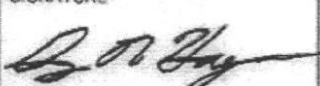
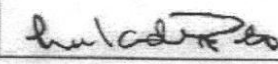


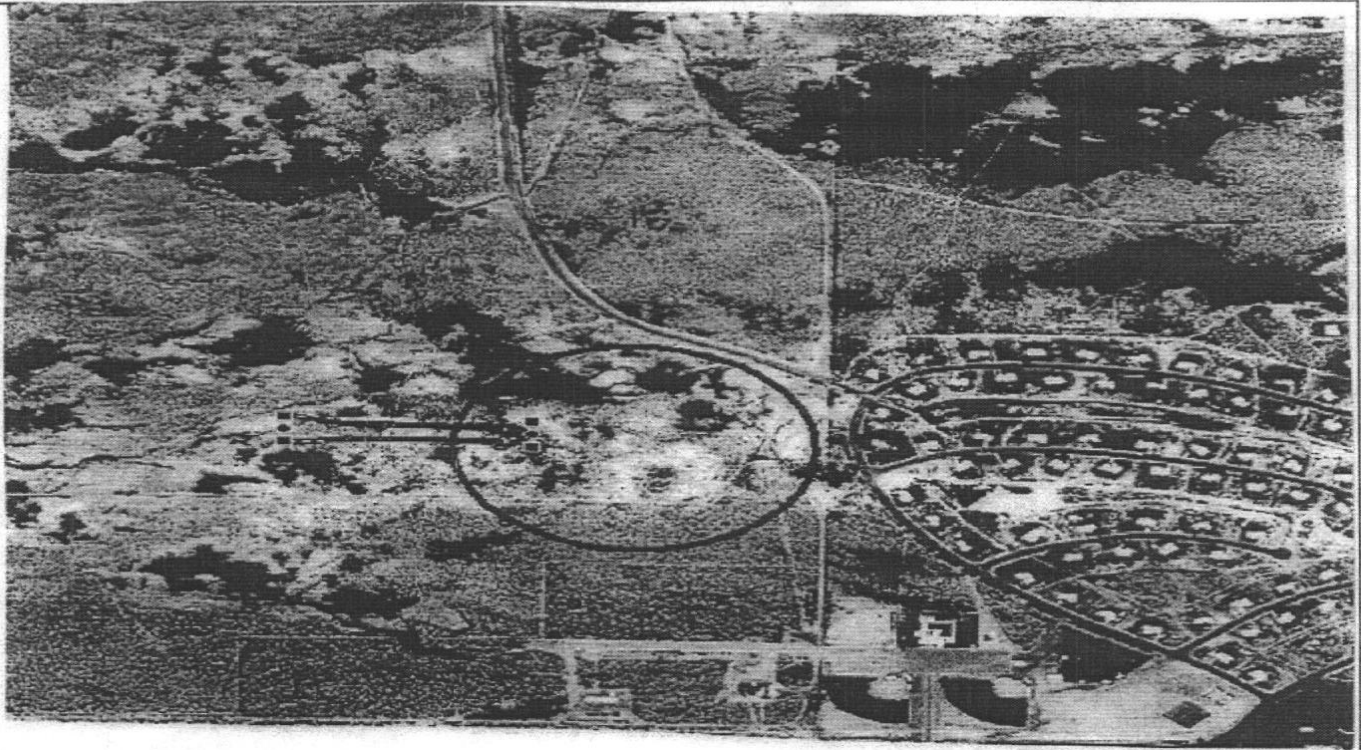
AIRBORNE UNIT ASSUMES RESPONSIBILITY FOR PERSONNEL INJURY AND EQUIPMENT DAMAGE ON DZ

DROP ZONE SURVEY	1A. DZ NAME Playas West Circular DZ		1B. ZAR INDEX NO.	2A. COUNTRY US	2B. STATE NM				
	3. MAP SERIES/SHEET NUMBER/ EDITION/ DATE OF MAP								
	4. SURVEY APPROVAL/DISAPPROVAL DATA								
4A1. DATE SURVEYED 20070619	4A2. TYPED NAME AND GRADE OF SURVEYOR Richard Barnes, 1LT		4A3. PHONE NUMBER (DSN) 228-9515	4A4. UNIT 563 OSS/OSK					
4B. DROP ZONE APPROVAL/DISAPPROVAL A = APPROVED D = DISAPPROVED	FOR	CDS/CRL/CRS	PER	HE	MFF	SATB	CRRC	HSLADS	HVCDS
	DAY	D	D	D	A	D	D	D	D
	NIGHT	D	D	D	A	D	D	D	D
4C. DATE APPROVED FOR GROUND OPERATIONS 33July07	NAME, GRADE AND SERVICE OF APPROVAL AUTHORITY PATRICK J. O'ROURKE, Maj, USAF		PHONE NUMBER (DSN) 228-0390		SIGNATURE 				
	UNIT AND LOCATION 48 RQS, Davis Monthan, AZ, 85707								
4D. DATE SAFETY OF FLIGHT REVIEW APPROVED 33July07	NAME AND GRADE OF REVIEWING OFFICER GUY R. HAGEN, Maj, USAF		PHONE NUMBER (DSN) 228-4163		SIGNATURE 				
	UNIT AND LOCATION 563rd OSS, Davis Monthan, AZ, 85707								
4E. DATE OF MAJCOM APPROVAL 350407	NAME AND GRADE OF APPROVING AUTHORITY LEE K. DEPALO, Col, USAF		PHONE NUMBER (DSN) 228-0563		SIGNATURE 				
	UNIT AND LOCATION 563rd RQG, Davis Monthan, AZ 85707								
5. COORDINATING ACTIVITIES									
A. DZ CONTROLLING AGENCY OR UNIT 563 OSS/OSO			B. MEMORANDUM OF UNDERSTANDING/LAND USE YES <input checked="" type="checkbox"/> NO <input type="checkbox"/> ATTACHED <input type="checkbox"/>				C. PHONE NUMBER (DSN) 228-1098		
D. RANGE CONTROL N/A			E. PHONE NUMBER (DSN) N/A						
6. DZ DIMENSIONS (YDS/MTRS) (FOR CIRCULAR DZ, ENTER RADIUS ONLY)									
A. LENGTH N/A		B. WIDTH N/A			C. RADIUS 200 yds				
POINT OF IMPACT DISTANCES FROM DZ LEADING EDGE			D. CDS PI N/A	E. PE PI N/A		F. HE PI N/A			
7. DZ AXIS DATA (OPTIONAL FOR CIRCULAR DZ)									
A. MAGNETIC N/A		B. GRID (MGRS) N/A		C. TRUE N/A		D. SOURCE/DATE OF VARIATION DATA 20070619			
8. GROUND POINT ELEVATION		A. CDS PI N/A	B. HE PI N/A		C. PE PI 4453		D. HIGHEST 4453		
9. DZ COORDINATES									
A. SPHEROID WGS-84		B. DATUM WGS-84		C. GRID ZONE 12R		D. EASTING N/A		E. NORTHING N/A	
F. GPS DERIVED COORDINATES YES <input checked="" type="checkbox"/> NO <input type="checkbox"/>			G. POINT OF ORIGIN 12R YA32654 33584 (Entrance Gate w/gaurd); PI 735 yds @ 310°						
H. POINT									
DZ CENTERPOINT		MGRS COORDINATES 12RYA 32242 34111		WGS84 LATITUDE (D-M.MM) N 31° 55.151'			WGS84 LONGITUDE (D-M.MM) N 108° 32.624'		
CDS PI		N/A		N/A			N/A		
PE PI		12RYA 32242 34111		N 31° 55.151'			N 108° 32.624'		
HE PI		N/A		N/A			N/A		
I. DZ CORNERS MGRS COORDINATES									
LEFT LEADING EDGE N/A				RIGHT LEADING EDGE N/A					
LEFT TRAILING EDGE N/A				RIGHT TRAILING EDGE N/A					

DZ NAME

Playas West Circular DZ

10. DZ DIAGRAM



11. REMARKS

1. This DZ is an approved Special Purpose Drop Zone IAW AFI 13-217 para 2.5.11 and sub-paragraphs.
2. User is responsible to schedule Playas Training Area; POC for information (505) 835-5312.
3. Contact 563 OSS/OSO two weeks prior to schedule air space and create applicable NOTAMS
4. DZ frequencies require coordination with 563 RQG Spectrum Manager DSN 228-4442. Frequencies for Angel Thunder 07 only will be 240.1 (Pri) 123.0 (Sec Bisbee CTAF).
5. Directions to Playas: From I-10, South on Exit 49; Left at sign for Playas Training Area
6. Ensure prior coordination is made with Operations Officer/IT Manager at (505) 436-0500 w, (505) 418-7786 c, (505) 418-0102 fax. Gate guard will alert Operations of arrival and ensure escort to PI.
7. DZ is Large open field of soft dirt and gravel with scrub brush and a few small trees and uneven ground.
8. There is a four foot barbed wire steel post fence to East along perimeter road and a cattle guard at gate where road to North connects to perimeter road.

12. PHOTOGRAPH AVAILABLE

YES

NO

LOW LEVEL ROUTES

NONE AVAILABLE

ROUTE NAME/DESIGNATOR